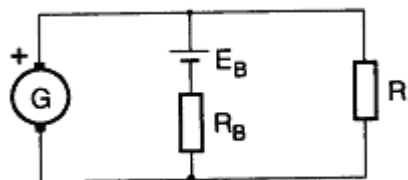


opgave 2.41



$$E_{\text{generator}} := 203 \cdot \text{V} \quad E_{\text{batteri}} := 201 \cdot \text{V}$$

$$R_{\text{generator}} := 2 \cdot \Omega \quad R_{\text{batteri}} := 1 \cdot \Omega \quad R_{\text{belastning}} := 80 \cdot \Omega$$